

Navigate by clicking on topic.



Gilboa Historical Society

Learning, sharing, and preserving our history

v. 17.3

QUARTERLY CONTENTS—FALL 2015

GHS Online	2
Elmer Hubbard, Inventor, by Amy Sternstein	3
Residences on Church Hill, by Gerry Stoner and Lee Hudson	8
Gilboa Public School I	10
The School in the Village, by Philander Stevens	11
Reformed Dutch Church	11
Reformed Dutch Church Parsonage	12
Jennie Coleman	13
M. Harter Brandow	14
Luther R. Ellis	15
Buckingham Estate	17
Isaac Cronk Estate	18
Addison Hagadorn	19
Ezra Brown	20
The Gilboa History Center Funding Campaign	21
Emma C. Davis	25

Helen I. Mackey	27
William H. Long	27
Jason B. Cronk	28
William and Frances Gilbert	29
Albert Layman	31
A. S. Thomas	31
Jennie Brown	32
Ward B. Mackey	34
Frank Mattice	34
Imer C. Wyckoff	35
Attn: Libraries & Historical Societies Promotion	35
One of Gilboa's Own Heroes, by Chloe Snyder	36
The Gilboa Museum, by Kristen Wyckoff	38
Village Photographs Needed, by Gerry Stoner	39
Gilboa Military Personnel, by LaVerne Hubbard	40



If you receive the *Quarterly* by USPS, please check your address and let us know of corrections or if you have a seasonal change of address. An asterisk or dagger after your name means your membership is paid up. No symbols? Please use the application on page 43 to earn *your* star.

GILBOA HISTORICAL SOCIETY ONLINE

Facebook: www.facebook.com/groups/gilboahistoricalsociety/

Internet web pages: www.gilboahome.com, www.gilboafossils.org

Calendar of events of historical interest: www.everythingoneonta.com

Click on filters, select **Region** [All], **Event Type** [History], and **submit**.

To list activities: www.everythingoneonta.com/submit-an-event/

Create a catchy *descriptive* title and a brief (<50 words) description of your upcoming local history event. Then fill in the form using your tab key to navigate. For the location and category slot, select “Other” and “History,” and then submit your event. It will be checked and posted.

Published by the Gilboa Historical Society, Post Office Box 52, Gilboa, NY 12076
Thanks to the Department of Environmental Protection and the Town of Gilboa.

Copyright © 2015 All Rights Reserved

Linda Newerla, President

Lee Hudson, Vice President

Janette Reynolds, Secretary

Wilma Jones, Treasurer

Shirley Kutzscher, Recording Secretary

Irene Hess, Linda Stratigos, Kristin Wyckoff, Directors

The Gilboa Historical Society meets at 7:00 P.M. at the Gilboa Town Hall on the third Wednesday of the month, March–December.

The Gilboa Museum, 122 Stryker Road, is open noon–4:30 Saturdays and Sundays, from July through Labor Day, and Columbus Day weekend and by appointment (607 588-9413) <http://www.gilboafossils.org>

www.facebook.com/groups/gilboahistoricalsociety

Send feedback to Amy Sternstein at geonoodle@nycap.rr.com

Village photographs, Gilboa Tourism Map, GHS *Quarterly*, and other items are available online at <http://www.gilboahome.com>

Send feedback, suggestions, and information about pictures and postcards to the GHS *Quarterly* gerrys@gilboahome.com or HUDSONLEE2@AOL.COM
Gerry Stoner, 152 Starheim Road, Stamford, NY 12167

Gilboa Historical Society publications are free for non-profit use, but please alert us to this use so we may share it with our contributors. Use this credit: Courtesy of [author's name] and the Gilboa Historical Society

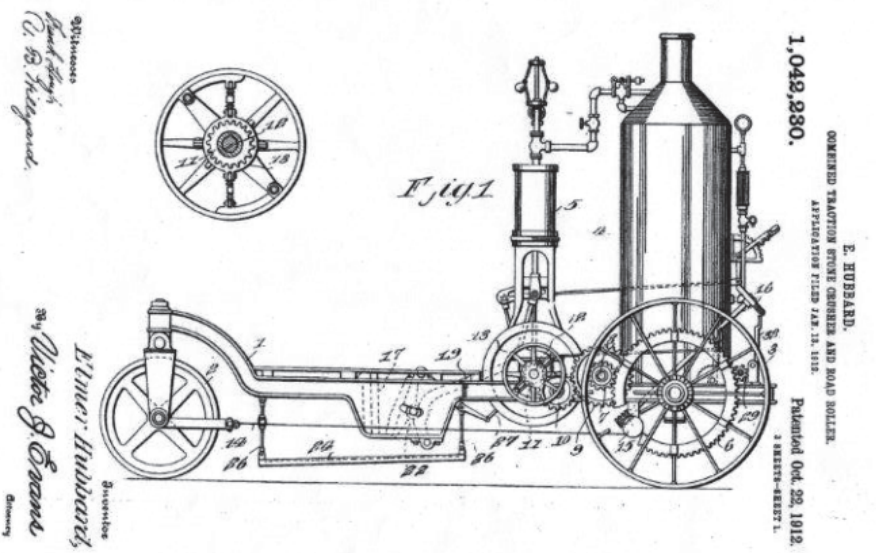
ELMER HUBBARD, INVENTOR

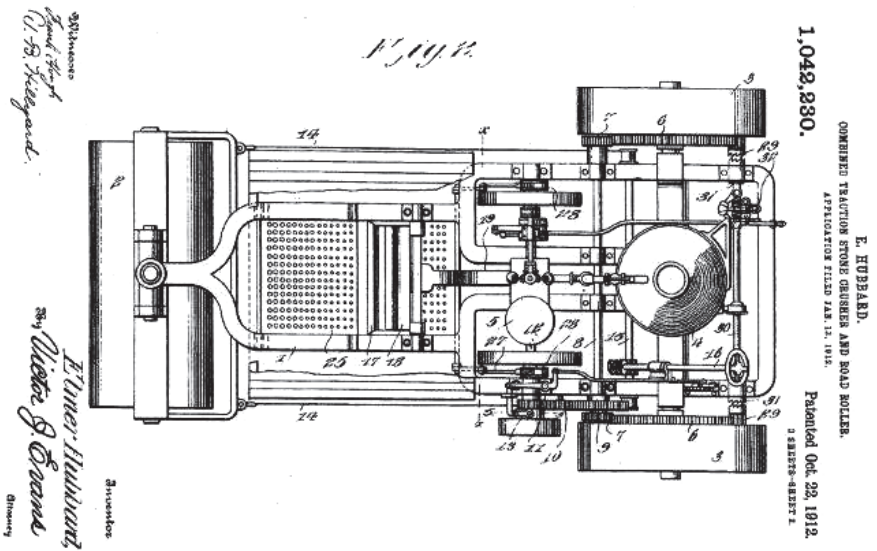
Amy Sternstein

Gilboa may be small in population compared to other places, but it certainly has had an impressive number of patents granted to the creative people who lived there through the years. This article is the first in a series exploring those patents and the people who came up with them.

Patent number 1,042,230 was issued on October 22, 1912. It begins with: "Be it known that I, Elmer Hubbard, a citizen of the United States, residing at Gilboa, in the county of Schoharie and State of New York, have invented new and useful Improvements in Combined Traction Stone-Crushers and Rollers." It continues: "The purpose of this invention is the provision in a single machine of means whereby stone may be crushed for surfacing a roadway, the crushed stone graded and then deposited upon the roadway in layers of assorted sizes, means for rolling the roadway, and a machine which may be used as a traction engine for hauling loads or for performing any desired work requiring power."

Below is a side view of the machine and a top view is on the next page. The main frame could be of any desired construction. The machine was supported by a front roller and rear traction wheels, the latter having broad





treads and serving as rollers to compress the surface over which the machine would be propelled. A steam boiler was to be mounted upon the main frame at the rear, with an engine secured to the boiler. A suitable clutch would be employed for throwing the drive gearing into or out of action so that the machine as a whole could remain stationary while the stone crusher and separating mechanisms were in operation. To steer the machine, the attendant would turn a shaft. One cable would wind upon the shaft while a second cable would unwind, causing the roller to turn in the desired direction when in motion over the road.

The crushing mechanism was comprised of a stationary jaw and a movable jaw. A lever operated the movable jaw. A fulcrum roller would transmit power from the lever to the jaw, and this invention provided fulcrum rollers of different diameters so that the stone could be crushed to any degree of fineness. A stone separator was arranged to receive the crushed stone from the crushing jaws, and was comprised of a frame and a screen, the latter having openings of varying size. While the attendant rotated a crank shaft, the separator would vibrate, thus causing stones of different sizes to separate and fall through the appropriate opening in the screen. The openings would gradually increase in size from rear to front (United States Patent Office).

Elmer Hubbard was born in Gilboa on May 18, 1882, the son of Gamalia and Margaret Ann Christiana Hubbard. He almost didn't make it to adulthood. In June of 1899, at 17 years old, he "met with a serious if not fatal accident. While leading a colt from a pasture in which were some other colts

belonging to some of the neighbors, one of them kicked him in the face, injuring him very badly. Dr. Rutson Leonard was at once summoned” (Gilboa *Monitor*, June 8, 1899, p. 3). Thankfully, Elmer recovered. At 20 years old, he was active on the local baseball team. “O. A. DeSilva, manager of our base ball nine, goes to Grand Gorge the Fourth with a fast aggregation of ball tossers as the following will indicate: Elliott Baylis, 2nd base; Elmer Hubbard, pitcher; John Hubbard, short stop; Ed Wright, catcher; S. McCabe, 3rd base; Ward Wiltse, 1st base; G. Henderson, right field; Chas. Schermerhorn, center field; Will Clum, left field. Manager Murphy will have to keep an eye single to his laurels or there will be the scalps of nine Delaware county braves for the belts of our invincibles” (Gilboa *Monitor*, July 3, 1902, p. 3).

On August 25, 1903, at the age of 21, Elmer Hubbard married Agnes W. Haskin. They would go on to have eight children. They were very sociable and had many friends, especially enjoying the company of Coello Spencer and family (Gilboa *Monitor*, several issues). Agnes worked as a school teacher, while Elmer had several jobs throughout the years. He was mainly a dairy farmer and also sold fertilizer (Gilboa *Monitor*, Feb. 27, 1913, p. 3). Elmer was one of the first owners of an automobile in Gilboa, and would often take his family on rides to Albany and Schenectady, staying overnight each time (Gilboa *Monitor*, 1912, several issues). In a compilation of Town Accounts Listed by the Respective Town, Schoharie County, for Year 1912, Elmer



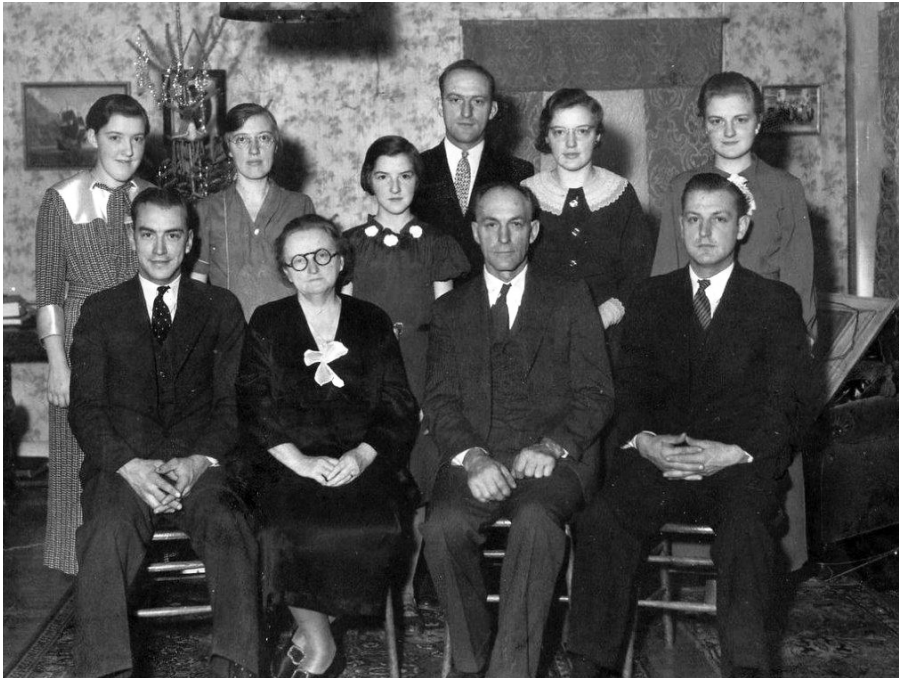
Elmer at his prime as Gilboa superintendent. He is front row left, and always stood ramrod straight. It is interesting to note that the Gilboa Town Hall at this time was on [Old] Stryker Road, and was later moved onto the land behind the Gilboa Town Garage to serve as the home of the Gilboa Museum.

Photo courtesy of Gerald Hubbard

800112.001

Hubbard is listed as superintendent (with D. W. Southard as supervisor) of Gilboa (*Gilboa Monitor*, Jan. 2, 1913, p. 1). Elmer would have been 30 years old at the time, and this was the same year that he received the patent for his invention. Perhaps while working for the town, he saw a need for improvement to the road equipment and created it himself (Gerry Hubbard). In 1932, at age 50, Elmer Hubbard succeeded at becoming the supervisor of Gilboa, a position he held until 1939. This was especially notable because he was one of only a handful of Democrats ever to hold office in Gilboa (article written by LaVerne Hubbard, *Gilboa Historical Society Newsletter*, Fall 2011, p. 19).

One of the most horrible days in Elmer's life came on January 13, 1946. His beloved wife of 43 years, Agnes, died following a heart attack. About a year prior, she had fallen and broken a leg or hip, and had been confined to a wheel chair or bedridden since then (*Schenectady Gazette*, Jan. 18, 1946; LaVerne Hubbard). Gerry Hubbard remembers that his grandmother had bought him several pairs of shoes. The night Agnes died, he asked his



Elmer and Agnes Hubbard and their children. Front: Earl, Agnes, Elmer, and Merel. Rear: Ina Bell, Madeline, Winifred, Clifton, Lorraine, and Evelyn.

Photo courtesy of Gerald Hubbard

800112.001

mother who would now buy him shoes. At that, Elmer burst into tremendous sobbing. A strong, quiet, gentle man, who faced and conquered many hardships, he was shattered by this loss. The funeral was at their house, and an all-night vigil was held to watch the casket (LaVerne Hubbard).

Although mainly a dairy farmer, Elmer Hubbard had a very mechanical mind and liked to design and build things to make life's tasks easier. Always a hard worker, he and his brother John built a barn when they were still young. Elmer had a blacksmith shop. He had electricity long before it was common. It was produced by a Delco Power Plant, which was a generator with a bank of many 12-volt batteries. This ran the lights in the barn. He had a gasoline-powered milking machine. He also arranged for running water in the house via a water-powered Ram pump. The pump was powered by water flowing from a spring. The pump then forced the water up to the house, where it was stored in a tank in the attic. Gravity then allowed this water to flow down through the faucets (LaVerne Hubbard).

Elmer Hubbard never went beyond the 4th grade in school (1940 U.S. Federal Census), most likely because his father died when he was very young and he had to go to work to help support his mother and family (LaVerne Hubbard). Yet in spite of that, because of his strong work ethic and intelligent mind, he became very successful in life. It is not known if the invention for which he received a patent was ever built, but he still had the satisfaction of knowing that he had come up with an idea worthy of a patent. Elmer passed away on September 21, 1964, and is buried in the Gilboa Rural Cemetery. He was 82.

I would like to express my gratitude to both LaVerne and Gerry Hubbard for sharing their personal stories with me for this article.



Amy Sternstein, an avid fossil collector who lives in Colonie, New York, discovered Gilboa while studying the fossils of NY State. Falling in love with the town, she now pursues Gilboa history during both the Devonian period and the early 20th century. An electrical engineer, Amy has designed circuit boards and written technical manuals. She also tutors students in math and science while hoping one day to move to Gilboa.

Facebook

www.facebook.com/groups/gilboahistoricalsociety/

RESIDENCES ON CHURCH HILL

1917 in the Village of Gilboa

Gerry Stoner and Lee Hudson

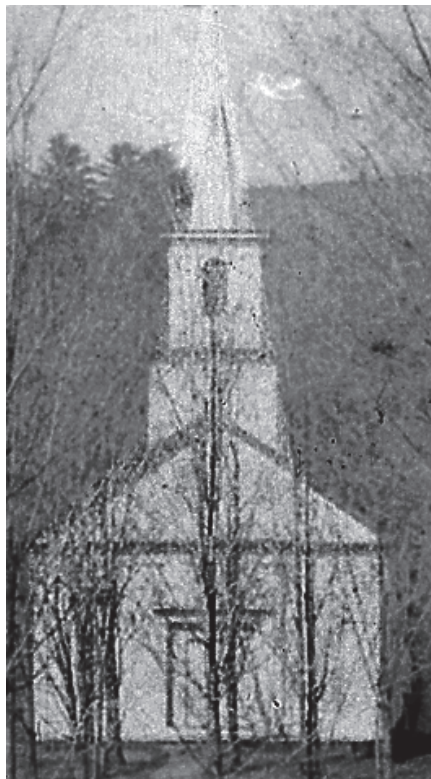
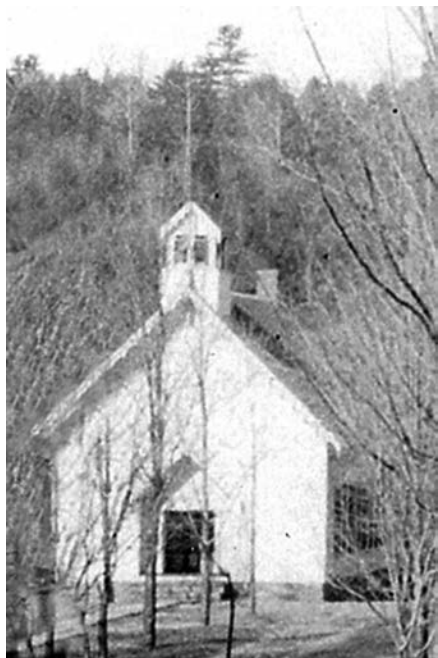
In the last two editions of the *Quarterly*, we explored retail and industrial areas starting and ending at the north end of Main Street by the school and the Reformed Dutch Church in the center of the village.

In this issue, we'll use the end of Main Street as the start for two more walks: from there along Church Street to Flat Creek Road and up the hill toward the present-day town hall; and also from there on Back Road up the hill toward the present-day Gilboa-Conesville Central School.



Campus for the Gilboa School, Reformed Dutch Church, and the church parsonage. The camera was on Back Road; the house on the right was owned by Albert Layman (lot 99) and the house to the left was owned by William and Frances Gilbert (lot 118).

On May 30, 1836 when this area was still part of the town of Broome, Thomas O. H. Croswell and Abel Brace gave land to the Consistory of the Reformed Dutch Church for the exclusive purpose of locating a church and public schoolhouse near Gilboa village. The consideration was \$10. The governing authority (Consistory) included: Croswell, Brace, Winslow Paige, Pastor; Barent W. Stryker, James Lewis (Elders); and John F. Stryker (Deacon). In 1905 the Church governance shifted from Consistory to Incorporation. Photograph courtesy of Beatrice Mattice

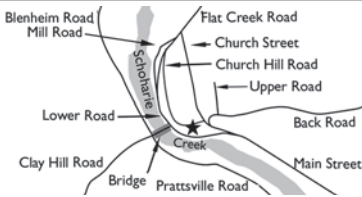


These are poor-quality pictures of the campus in the center of the village—the school in the upper left corner shows its resemblance to the UMC currently on Route 990v, but we need to get a better picture of it in the village.

The two pictures on the right are of the Reformed Dutch Church, and both were Photoshopped from photocopies of published material. Again, this was an essential building for our history and we need to replace them. It appears that the church is not in the DEP archives.

Finally, the parsonage. It is obviously a beautiful structure that housed a lot of Gilboa history.

Please let us know (607 652-2665) if you have better pictures of any of these important buildings. Courtesy of Beatrice Mattice.



Gilboa Public School 1

Lot number: 103, on Church Street

Lot size: 0.10 acre on the west side of the road

Owner: School District Number 1

The original stone schoolhouse was built northeast of the church. In 1857, it was replaced by a 30- × 40-foot wood building and positioned in the southeast corner of the lot to make room for the parsonage.

The school was a one-story building with a rear addition for a recitation or primary room, an attractive belfry on the front with an impressive 20-inch diameter bell and ornamental fascia with scroll works. The 36 double desks were built with cast ends, hardwood tops and backs and hinged seats. The school was heated with stoves and had a wood house at the rear of the building and two privies. Although it had an inside sink with running village water and one nine-light sash window, it did not have electric lights.

The school building was in the footprint of the projected dam, so it was moved across the creek and downstream onto today's Old Stryker Road. When the new central school became operational in 1930, the building was repurposed as the new home of the United Methodist Church, and after the flood of 1996, it was moved to its current location on State Route 990v.



Courtesy of Beatrice Mattice.

The School in the Village Philander Stevens, 1819–1904

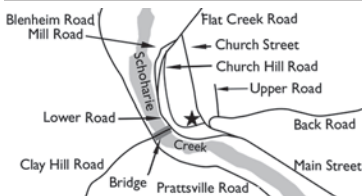
I must not forget to speak of the schools of those early days. The only school I attended was in the old school house on the hill, near where the Presbyterian Church [aka Reformed Dutch Church] now stands in Gilboa. I well remember just how it looked; the desks along the wall on two sides of the room and one end, and the board seats in front of the desks. The girls sitting on one side and the boys on the other, some of the larger girls and boys at the end, the teacher's desk separating them.

At the other end of the room was a large open fireplace, originally where great logs were burned; but, later, this was boarded up and a large box stove put up which would take in wood four feet long, and had to be kept red hot to make the room any way comfortable in cold weather.

The wood was drawn as required by different patrons of the school, and cut at recess or before school hours by the boys; sometimes the teacher helping. Teachers always boarded around. I well remember the first day I ever went to school. The teacher, a Mr. Freese, who was boarding at our house, took me with him. I was called up to his desk to say A, B, C, and I remember the laugh of the school at my bashfulness and awkwardness.

As a rule, strict discipline was required during school hours, and the schoolmaster did not spare the rod; but when school was out the master often joined with the boys in games. Base ball was popular then as well as now, and snow-forts were built, defended by one party and attacked by another, often leading to real fights and bloody noses before the fort was captured or the aggressors repulsed.

Philander Stevens: Recollections and Incidents of a Lifetime (1896), p. 28.



Reformed Dutch Church

Lot number: 102, on Church Street

Lot size: 0.80 acre on the west side of the road

Owner: Reformed Dutch Church

In 1839, this church building was moved to Gilboa from the Phelps farm in Conesville and positioned to face due east. An extension was built on the

back behind the pulpit to accommodate the choir, a heating system installed, and straight-back seating replaced with 24 oak pews and plush cushions.

The colonial belfry had a spire with a wrought iron finial and weather vane and housed a 30-inch Meneely bell weighing 550 pounds. There were two Meneely bell foundries: the West Troy (Watervliet) company was founded in 1826 by Andrew Meneely and two of his sons; the second one across the Hudson in Troy was founded by a third son, Clinton H. Meneely, in 1870. The two companies had sibling rivalry, but Clinton's company trade-marked the Meneely Bell Company name and probably forged the Reformed Dutch Church bell. The two companies produced about 65,000 bells before they both closed in 1952.

Four of the nine windows were memorial stained glass: a double pane gothic in the back arranged by Mary Conover for her father; one Tiffany Glass Co. installation from Mrs. Fredenburgh; and a pair of windows from the Wyckoff family placed on either side of the pulpit.*

The building's heavy timber frame structure of 35- × 56- feet had attractive outside overlay circle tops, wood transoms, and rolling slat blinds over the windows. The front double doors were mounted in a recessed colonial frame with raised molding.

Inside walls were wainscoted about 4 feet high in a clear beaded pine with capped and stained moldings. A neat paneled rail framed the choir with two swing doors for entrance. Both the choir extension and the rostrum were raised. The eight-lamp brass chandelier with ornamental shades was lit by acetylene.

In 1906 when the church incorporated as First Reformed Dutch Church of Gilboa, N.Y., Edward J. Ruliffson was Minister; Ernest E. Billings, Charles Ellerson, and H. Oscar Lewis were Elders; and I. C. Wyckoff, Eugene E. Howe, H. Louie Reed, and William T. Miller were Deacons.

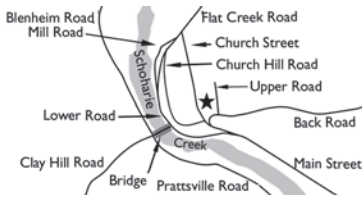
Reformed Dutch Church Parsonage

Around 1860, the school was moved to the other end of the property on lot 103, and a 32- × 40-foot parsonage was built. It had two stories, a cellar, and a tin roof over the flat main roof and half pitch attachment. A porch crossed the front, and a wood house with attached privy was located in the back. The original barn burned a number of years later. A colonial cornice and small columns with scroll brackets framed a front sash door with figured

* Meneely Bell Foundry, as referenced by Wikipedia to Meneely Bell Online Museum; Rensselaer County Historical Society; Hudson-Mohawk Industrial Gateway; and the Manuscripts & Special Collections of the Cultural Education Center of the New York State Library, Albany, NY 12230.

glass and a round window in the attic. Inside, the space was flexible with double sliding doors between the parlor and sitting room. Village water was piped to a cast iron sink in the kitchen.

When a resident pastor was not living there, the space was rented out.



Jennie Coleman

Lot number: 101, on Church Street

Lot size: 0.90 acre on the east side of the road

Owner: Jennie Coleman

As we walk up Church Street, the first house on the right belongs to Jennie Coleman. Her very nice home is somewhat typical of Church Street: the home has a generous setback from the road and an addition built onto the back side for a pantry, summer kitchen, root garden, outhouse, etc. There was a barn on the rear property line, and a garden between the house and the barn.



Jennie Coleman's house as seen from the street coming from Main Street.

Courtesy of the Gilboa Historical Society

741101.003

This two-story house with standing seam tin roof, wraparound veranda, and art glass panels at the sides of the front door was built by Jim Mills. Mrs. Coleman, formerly married to William Hartwell, bought the home from her in-laws, George A. and Mary Hartwell, in 1900. Quite industriously, she added iron sinks, new windows, a new foundation, roof, chimney, stables, a back porch, village water and indoor plumbing to the house's 6 bedrooms, cellar, wood house, barn, poultry house, and large lot with a 450-foot flagstone walk.

More than a home, the building also housed 2 shops: Mrs. Coleman's 26-year-old dressmaking business sold sewing materials and supplies; and her son-in-law Fred Siebel's barber shop also sold ice cream, and confectionaries. Siebel started his business here after marrying Mrs. Coleman's daughter.

In addition to the small orchard, the 27 maple trees that shaded the house led to its description as a beautiful park. By the time the house was taken in 1917, Mrs. Coleman had lived there 31 years.



M. Harter Brandow

Lot number: 100, on Church Street

Lot size: 0.19 acre on the east side of the road

Owner: M. H. Brandow

Harriet and Charles Hitchcock owned this long narrow property next door to the Colemans until 1889 when they sold it to Peter J. and Ellen Richtmyer. In 1906, M. Harter Brandow bought the two-story modern frame house with three gable roofs, railroad cornice with ornamental brackets and spindle work, and an attached woodshed. And while he enjoyed village



Courtesy of the Gilboa Historical Society

741100



M. Harter Brandow home, Courtesy of the Gilboa Historical Society

741100

water in the house, he had no electricity, indoor plumbing, or heating plant. With a barn and small henhouse, Brandow also managed to fit shade trees, a garden and fruit trees onto his narrow lot.



Luther R. Ellis

Lot number: 95, on Church Street

Lot size: 0.80 acre on the west side of the road

Owner: Luther R. Ellis

Facing these last two houses is the Luther Ellis property bought in 1896 from Luther’s brother after living there with his wife Anna Belle and aging parents James P. and Elizabeth Rose Ellis. A self-proclaimed “jackknife carpenter,” Luther Ellis built a wagon shed, wood house, and three henhouses for 360 chickens on the shallow lot. Later, in 1913, he sold his meat business to Frank Van Loan and built an ice house with a 70-ton capacity. He

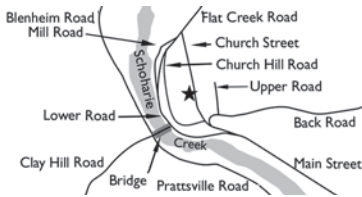


The residence of Captain Luther R. Ellis is a small, trim house with chickens and a garden in the back. It is across the street from the Ellis and Brandow homes, and might have had a perfect view of the iron bridge and the creamery from the backyard. Below, his ice house is visible on the left at the end of the drive in the side yard. Courtesy of the Gilboa Historical Society

741095



gathered the ice at the upper end of the village from the Schoharie Creek and sold it throughout town, returning to a business he once shared with D. Mattice 20 years earlier when they harvested the ice fields of the Hudson. His ice house is visible at the end of the drive.



Buckingham Estate

Lot number: 96, on Church Street

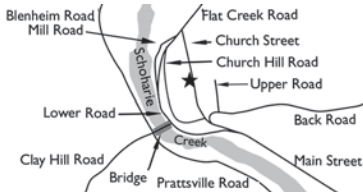
Lot size: 0.30 acre stretching across the road

Owner: Buckingham Estate

The Buckingham family bought this one-and-a-half story colonial style home with a heavy cornice entry from Daniel Mackey and his wife in 1863. Rev. Merritt Buckingham (d. 1874) and his wife Celinda had 5 children, and the widow continued living independently at this home with her lovely gardens with 3 apple and 7 plum trees until the City took title to the property.



The narrow face of the Buckingham house was on the east (right) side of the road, and the sheds were at the far end on the left side of the road. A garden was in between the sheds and Church Street.



Isaac Cronk Estate

Lot number: 88, on Church Street

Lot size: 0.80 acre on the west side of the road

Owner: Isaac Cronk Estate

Isaac had bought this home in 1894 from Le Grand Van Tuyl, and the family lived there until Isaac died around 1916. While his sons, Frank and George, inherited the property, Isaac's will stipulated that Frank's stepmother Catherine could stay in the house as long as she lived.

George and wife Edith conveyed their share to Frank, and Catherine continued to live independently in the two-story nine-room home with only the amenity of village water. Out back was a lean-to, barn, wood house and henhouse. Her porch along the front and side afforded views of Church Hill, Main Street, her small orchard of cherry trees, rhubarb and currant bushes, and a lovely yard shaded by 8 maple trees.





This plot on the west side of Church Street was wide but not deep; the left side of the house butted up against the left side of the property line, the barn's right side was on the property's right line, and the garden, traditionally placed between the buildings, maintained this position but the orientation of house/garden/barn was shifted 90° to compensate for the lot's lack of depth.

Courtesy of the Gilboa Historical Society 741088



Addison Hagadorn

Lot number: 97, on Church Street

Lot size: 0.30 acre on the east side of the road

Owner: Addison Hagadorn

Two properties faced Church Street across the street from Frank Cronk and his stepmother, Catherine. On the right was Addison Hagadorn.

Considered one of Gilboa's best residential properties, this home was built by family member Abram A. Hoagland in 1866. Displaying a scroll and bracket architecture in the old Eastlake style with Colonial aspects, this fine two-story house had nine rooms, a summer kitchen, cellar, flat roof, and a charcoal-filtered cistern instead of village water. The backyard garden was framed with 10 maple trees, a few plum, pear and cherry trees with currant bushes, roses, barberry and lilies.

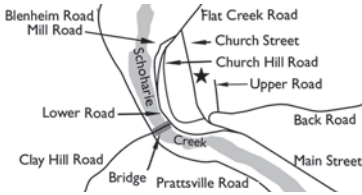
Addison Hagadorn's various activities included a mercantile business with brother Frank, postmaster appointment, and eleven terms as Town Supervisor. When he died, he left the property to his wife Frances and sister Rosanna.

Gilboa Historical Society Museum Web Site

OPEN 24/7

www.gilboafossils.org

Email this address to friends & family.



Ezra Brown

Lot number: 98, on Church Street

Lot size: 0.30 acre on the east side of the road

Owner: Ezra Brown

Ezra Brown's property was adjacent to Addison Hagadorn's on the east side of the road. Raymond Kingsley sold this property in 1898 to Martha Reed, who in turn sold it to William L. and Hattie B. Shutts in 1910. Their daughter's family, Ezra and Hattie E. (Shutts) Brown with daughter Julia A., purchased it in 1915. For a while, Hattie Brown's sister, Mrs. Julie Zelie, rented a part of it.

The Brown property boasted a small orchard of fruit trees, currant and raspberry bushes, grape vines, and grew rhubarb. Flanking the 13-room, two-story home was a 60-foot bluestone walk and veranda. They had village water but no electricity, heat, or inside plumbing. The wood house and outhouse were connected to the back of the home, affording the luxury of not having to go outside to reach them. Their music room and brick cellar floor were the envy of their neighbors.

Please turn to page 25

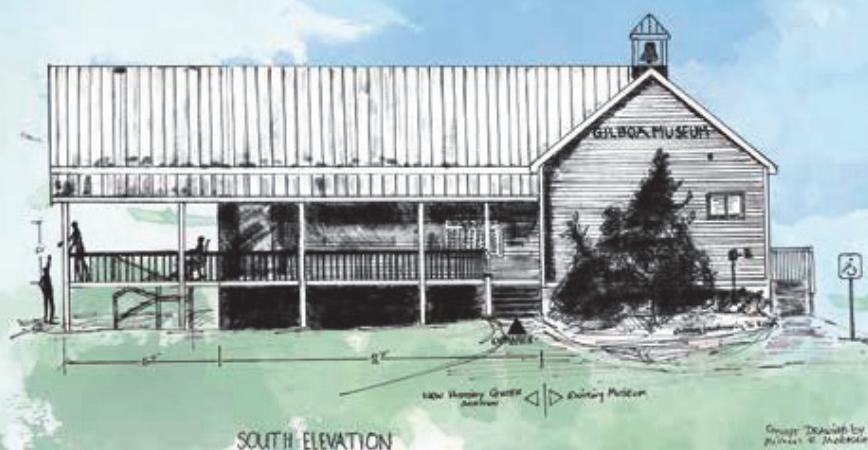


Ezra Brown family home. Courtesy of the Gilboa Historical Society

Pull out this centerfold, talk it over with your family, and please support the Gilboa History Center!

THE GILBOA HISTORY CENTER

AN ADDITION TO THE GILBOA MUSEUM



CAMPAIGN IS UNDER WAY!

CAMPAIGN IS UNDER WAY

THE GILBOA MUSEUM IS GROWING!

The Juried Family Foundation contributed seed funding to launch the construction of an addition to the Gilboa Museum. The addition will be called **The Gilboa History Center**.

THE NEW CENTER WILL:

- Double the size of the current museum
- Increase historical displays and educational presentations
- Furnish space and resources for historical and genealogical research
- Provide a place for meetings
- Add outdoor covered space for visitors and community events.

WHY SHOULD I GIVE?



YOU CAN HELP SUPPORT OUR COMMUNITY PROJECT

Gilboa's history is unique—with paleontological, cultural, and environmental features:

- 380-million-year-old Devonian fossils revealing the first trees on Earth
- Old Gilboa Village and its township
- The Gilboa Dam/Schoharie Reservoir.

Help preserve Gilboa's history for future generations. The museum's impressive growing collection deserves our support—and this new addition is needed to display and care for those materials. Perhaps some of the collection came from your family—and with new acquisitions will fill in the story of Gilboa's history.

Your gift during this campaign supports a cultural, recreational, and educational treasure that benefits the community and local tourism.

Thank you so much for your help!

BUILD A FUTURE FOR GILBOA'S PAST

DONATE ONLINE @ <http://northerncatskillshistory.com/ghs-membership-form/>
YOUR GIFT IS 100% TAX DEDUCTIBLE. THE GILBOA HISTORICAL SOCIETY IS A NON-PROFIT 501 (C) 3 CORPORATION.

HOW YOU CAN HELP

Four plaques will be placed on the porch along the outside entrance honoring those who have supported the building of the Gilboa History Center—**Heritage Families, Memorials, Sponsors, and Business Supporters**. Visitors to the Center will be able to see these testaments at any time. Please select the option that is best for you. **All donations of \$25 and over will receive a one-year membership to the Gilboa Historical Society with our deepest appreciation for your tax-deductible gift.**

HERITAGE FAMILIES

\$100 \$250 \$500 \$750 \$1,000 \$

Are you descended from one of Gilboa's founding families who lived in the town from the 1700s to 1925? This plaque will recognize families from Gilboa's earliest history and honor your family's heritage.

FAMILY NAME

DONOR NAME(S)

MEMORIALS

\$50 \$100 \$

This plaque will celebrate "The Memory of" an individual you name.

ENTER NAMES: In Memory of

by

SPONSORS

\$25 \$50 \$100 \$200 \$.....

This plaque will acknowledge your generosity as a supporter of the Gilboa History Center.

NAME

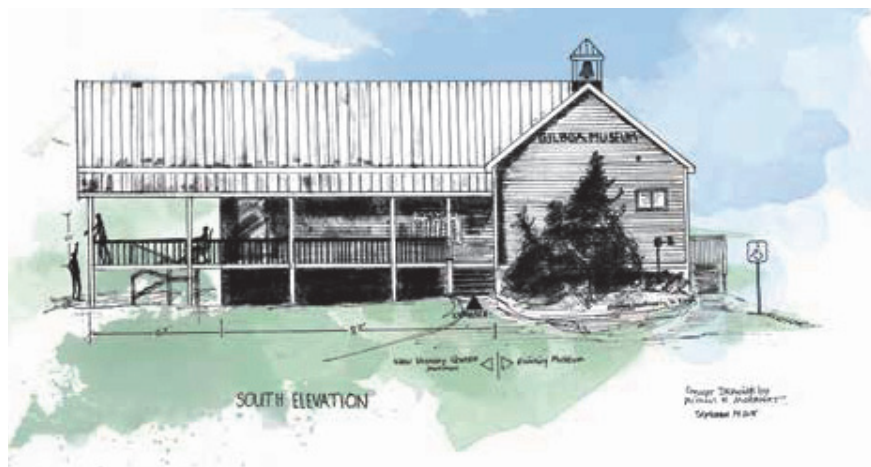
YOU CAN DIRECT YOUR GIFT TO (CIRCLE CHOICE): EXHIBITS, GENEALOGY, EVENTS, PRESERVATION OF MATERIALS, OR YOUTH AND SCHOOL ACTIVITIES.

BUSINESS SUPPORTERS

\$100 \$250 \$500 \$1,000 \$.....

This plaque will serve as a tribute to businesses who contribute money or services.

BUSINESS NAME



South elevation concept drawing by Michael R. Morhart.

PLEASE COMPLETE YOUR DONOR FORM AND THE FORM BELOW AND RETURN TO:

Gilboa Historical Society
P.O. Box 52
Gilboa, NY 12076

Checks payable to: Gilboa Historical Society.

All gifts of \$25 and over receive a one-year membership to the Gilboa Historical Society.
If you are currently a member, your membership will be extended.

NAME

ADDRESS

CITY STATE ZIP

EMAIL

Seasonal address for mailings: Mar. Jun. Sept. Dec.

ADDRESS

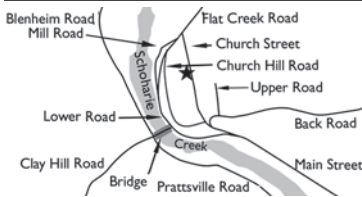
CITY STATE ZIP



Esra Brown’s garden appeared very lush the summer of 1917.

Courtesy of the Gilboa Historical Society

09801



Emma C. Davis

Lot number: 87, on Church Street

Lot size: 0.70 acre on the west side of the road

Owner: Emma C. Davis

On the left, there are two properties before the junction with Flat Creek Road. The first is Emma Davis’ property next door to Isaac Cronk. The lot was deeper than Cronk’s, stretching down to Lower Road.

The two-story home had 11 rooms, bath, attic, and cellar with a new roof, chimney, village water, few partitions, Kelsey hot-air heat, and rolling slat blinds outside on the windows. The property’s extensive garden backed up to the barn and henhouse with shrubs, berry bushes, cherry trees, and five maples in its side and front yards.

Emma married William J. Davis of Davis and Palmer General Store in



Above, the Emma C. Davis home. Below, the deep plot shows the orientation with the rows of the garden stretching back through the lot.

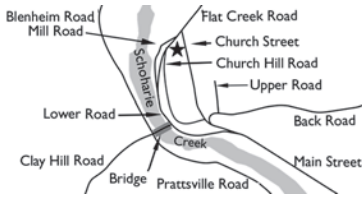
Courtesy of the Gilboa Historical Society

741087



1901 and the next year was deeded this property from Elizabeth Cronk Davis, William’s mother and the widow of Angelo Davis. Prior to Angelo’s deed in 1886, Charles Champion had sold the property to Isaac Cronk in 1885.

When the City took title to the home, Emma had lived there for 15 years, and William for 32 years.



Helen I. Mackey

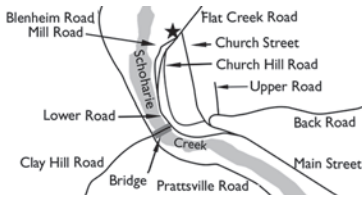
Lot number: 84, on Flat Creek Road

Lot size: 1.27 acres on the west side of the road

Owner: Helen I. Mackey

The last property on the left before the junction with Flat Creek Road belonged to Helen I. Mackey. She was deeded this property from her father, Daniel Mackey, but lived most of the year in England. Ward B. Mackey says there are no buildings on it, and the tax roll uses “Flat Creek Road” as a location.

Three properties opposite this intersection run parallel to Flat Creek.



William H. Long

Lot number: 132 on Flat Creek Road

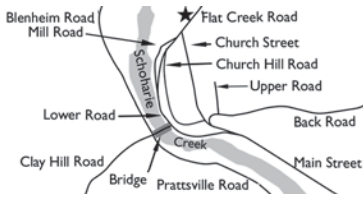
Lot size: .66 acre on the north side of the road

Owner: William H. Long

William H. Long’s lot 132 is a shallow lot with a large frontage on Flat Creek Road. A life-long Gilboa resident and three-term Town Supervisor, Long occupied the house for around 14 years after he bought this property from Almerin and Mary E. Van Loan.

He built a henhouse to supplement his work—teaching and selling fire insurance policies out of his home office for companies like Pioneer Fire Insurance and Catskill Mountain Fire Insurance. Most of his customers were in the Gilboa-Conesville area.

Digital copies of the *Quarterly* free at
<http://gilboahome.com>
 Email this address to friends & family.



Jason B. Cronk

Lot number: 77 on Flat Creek Road

Lot size: .30 acre on the north side of the road

Owner: Jason B. Cronk

Jason Cronk's third-of-an-acre property ran behind the Long residence but extended further to the northeast and had frontage up the hill on Flat Creek Road.

Cronk bought this property from Blanche C. Baker in 1911, whose deed was conveyed from Josiah Zelie and to Zelie from Sarah Hall in 1901.

Born in Gilboa, Cronk sold nearby lot 81, a 300-acre parcel, and moved to this site from Clay Hill at 56 years of age.

Only a five minute walk to the post office, his residence was on the main road from Gilboa to Broome Center. The 11-room plus attic home needed repairs. He hooked up village water for hot and cold running water into the bathroom tub, toilet, and washstand; built a kitchen and family dining room with partition cupboards; put a bay window in the living room;



Jason B. Cronk residence

Courtesy of the Gilboa Historical Society



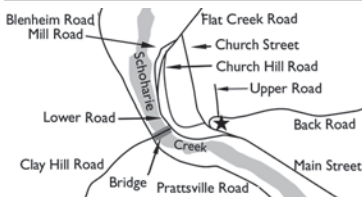
This is the portion of land behind the Long residence, and was probably accessed by grazing animals.

Courtesy of the Gilboa Historical Society 741077

connected acetylene lighting with fittings in each room; put in a concrete floor in the cellar; and heat with a new chimney from the cellar to outside of the top of the house. He improved the barn extensively and maintained the large orchard with dozens of trees and fruit bushes.

* * *

Back Road (aka Wyckoff Road) starts at the north end of Main Street and immediately makes a hairpin turn to the east-northeast. The first residence on Back Road is the Gilbert House in the hairpin turn.



William and Frances Gilbert

Lot number: 118, on Back Road

Lot size: .97 acre on the north side of the road

Owner: William and Frances Gilbert

William Augustus Gilbert and his wife Frances inherited this picturesque property from Augustus' mother Maria M. Gilbert (aka Rebecca Maria Gilbert) after her death in 1904. It was family-built and -owned through the generations that included grandmother Sarah A. Gilbert, uncle Andrew M. Gilbert, and wife Helen F. Brandow.

The views from French windows in the 10-room house were considered the "most sightly" on Church Hill. With a frontage of 333 feet leveled by a wrap around retaining wall, highways banked three sides of the property. From its rise of ground, the panorama included sightlines south along Main Street through the village; across the Schoharie and the valley on the far side; and over the road north to the Wyckoff farm. While short on conveniences



Above, the Gilbert House facing east in the center of the hairpin curve. The end of Main Street is to the right, and the shed shown here is looking north directly onto Back Road.

Courtesy of the Gilboa Historical Society

741118



inside the house and perhaps overexposed to the winter chill, the impressive lot behind the house was covered with fruit plantings and a garden.



Albert Layman

Lot number: 99, on Back Road (Upper Road to Flat Creek)

Lot size: 1.10 acres on the north side of the road

Owner: Albert Layman

Homes in the village changed hands often, but new home construction had virtually stopped in the 20th century. Albert Layman's home—1911—was the last of two homes built after 1900. He had come to Gilboa from North Blenheim 13 years before and rented in Jennie Coleman's home.

He worked as a successful in-demand master carpenter all over town and then bought an acre-and-a-quarter at the rear of her property and built this home on "the Hill." Later he added a barn and henhouse and put out 59 fruit trees, maples for shade, 2 beds of raspberries, grape vines and currants.

His home overlooked the creek with impressive views of the land on both sides and the village. Considered one of the best locations in Gilboa, Albert used his own skills and those of other craftsmen (Stephen Haines, Will Richtmyer, and Arthur Thorpe) to construct a modern two-story frame residence with a roof of part tin and part cedar shingles and built-in gutters. He added a Colonial design-heavy frieze with beveled siding, hardwood floors upstairs and down, village water, inside plumbing, piazza, and a porch on the front and back. With beautiful wood rail and balusters all around, Albert attached a finishing touch—an electric door bell.



A. S. Thomas

Lot number: 126, on Back Road

Lot size: 0.499 acre on the south side of the road, between the Gilbert home and Jennie Brown's back lot

Owner: A. S. Thomas

Hardware store owner A. Sidney Thomas bought this residence from Willard and Maria Schermerhorn, picked up the adjacent property at auction, and built the attached 12- x 24-foot building as part of the house. He lived there with his sister, Emogene, who occupied the second floor with its 4 rooms, and rented out 3 rooms in the basement. He also added a hen-house and

shed and put down all concrete walks and steps so as to enter the back part of the house. He put up two retaining walls, a wood house and another 9 × 13 one-story building connected at the back of the main house. A small garden to the side and a large assortment of fruit and nut trees dotted the hill up behind the home. When the Delaware & Eastern railroad was planned for Gilboa, the lines were to cross this property behind the house, placing a stop right across from the Gilboa House.



Resembling a house of the 1950s, Thomas' house was set to the rear of the lot, up against the treeline that marked the rear of the Gilboa House property.

Courtesy of DEP Public Affairs

741126



Jennie Brown

Lot number: 121, on Back Road

Lot size: 1.070 acres on the south side of the road, and extension to the E. W. Brown Furniture Store and Funeral Parlor

Owner: Jennie Brown

Lot 122 on Main Street was the Brown's residence and the front door for some of their businesses—the undertaking parlor, cabinet shop, and dressmaking

area. Lot 121 was directly behind the Main Street property, and they bought it in 1912 from Charlie and Julia Zelig to expand their businesses.

With its multiple buildings, the Browns called it “the shop property” with a barn that Ed Brown rebuilt, an old attached shed, his new cabinet shop, and a new henhouse. He ran water to the shop, wired all the buildings with electric lights, and even installed phones that could call from the house to the shop.

The parcel also held a large shed built by A. Sidney Thomas, David Zelig, Lewis Reed, and others. It was originally to be left to the Methodist Episcopal Church. The wagon roads around the back allowed for the public to drive in to the shed and tie their horses during church services.



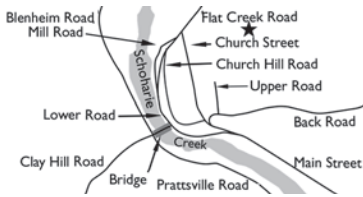
This Back Road property was a continuation of E. W. Brown’s Furniture Store and Undertaking Parlor on Main Street, and housed a barn and large covered shed for the storage of wood and materials for the businesses. The annex was used as a sash and blind factory. Courtesy of DEP Public Affairs

741126

* * *

The land east of Church Street and Back Road rose steeply, leading out of the footprint of the reservoir and toward today’s Route 990v. The land ran from the current post office to Gilboa-Conesville Central School.

There were three properties on this hill.



Ward B. Mackey

Lot number: 82, on Flat Creek Road

Lot size: 55.80 acres on the east side of the road

Owner: Ward B. Mackey

The northern lot, number 82, was deeded to Ward B. Mackey in 1904 from Helen Ida and Florence A. Mackey, who received the property from their father, Daniel Mackey.

Ward, a dairy farmer, expansively built a new barn and large extension, henhouse, hog house, and ice house. He added a storey to the house and added onto it; put a new roof on the tenant house; fenced the entire farm; installed village water; and painted all the buildings. On his upland area he put in a huge orchard with 58 apple trees and a generous assortment of prune, pear, peach, cherry, and plum. His berry bushes were lavish, including grape, red raspberry, and current.



Frank Mattice

Lot number: 119, on Back Road

Lot size: 12.88 acres on the north side of the road

Owner: Frank Mattice

The lot to the south of Ward Mackey's was lot 119. In 1903, Frank and Alice Mattice bought the property from George C. and Mary R. Shaler who had received the land in the will of Colba Reed in 1878.

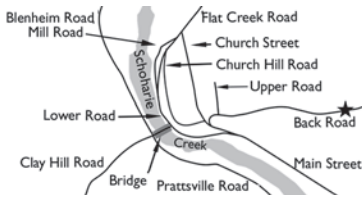
They bought the unimproved land in two portions in 1902, and built a distinguished house with ornamental gable brackets, clear-pine siding, windows with outside rolling slat blinds, a bay window, porch with five turned columns, scroll arch brackets, and ornamented gable. Their modern frame house was a story-and-a-half high, wood shingle roof, and a later addition with tin shingled roof. Later, he added a woodshed, coal house, toilet, village water, barn, hog pen, blacksmith shop, and chicken coop.

**Check the address on the rear of your
Quarterly and let us know of any corrections**

Frank raised corn, millet, hay, and oats on one portion of the land but he was also a beekeeper with 38 skeps (a straw or wicker beehive) of bees and used his Ford Omnibus that held 5 passengers for a livery service. When he was testifying at the claims hearing regarding his property, he corrected the attorney who noted “You raise bees” by saying “I keep bees.”

* * *

This property brings us down to Back Road (aka, Wyckoff Road).



Imer C. Wyckoff

Lot number: 120, on Back Road

Lot size: 12.88 acres on the north side of the road

Owner: Imer C. Wyckoff

Eli S. and Grace M. Persons sold a long, narrow piece of land along Back Road to Imer C. Wyckoff in 1913.

Wyckoff bought the land to change the route of the highway—to widen it and provide a better grade for the road from the village to his farm. The road he built was 70 feet at its widest and cleared of brush, open to the public, and fenced on one side.

Although the land was privately bought and cleared, the village authorities helped Wyckoff maintain it.

Sources:

Dr. Benjamin Fanning “Old Gilboa,” I & II, *Gilboa Monitor* April 20, May 11, 1916); William E. Roscoe, *History of Schoharie County* (1882), pp. 119-130; W. Earl Lewis, “Memories of Old Gilboa in the 1900s” (1978), Gilboa Historical Society Collection; Board of Water Supply of the City of New York Civil Case Files, 1917-1932; and the *Gilboa Monitor*.

Attention: Libraries and Historical Societies

PROMOTE YOUR ACTIVITIES

at www.everythingoneonta.com/submit-an-event/ Fill in the form, use a good, *descriptive* title and a brief (<50 words) description of your upcoming local history event. In the *Location and Category* slot, select “Other” and “History,” and then submit your event.

It will be checked and posted for all of us to see.

ONE OF GILBOA'S OWN HEROES

Chloe Snyder

When the Gilboa dam was under construction between the years of 1919 and 1927, many residents of the valley hamlet were required to abandon their homes to make room for the new reservoir. Their only consolation was the promise of a boost in town finances collected from the taxes the City of New York would pay for use of the stored water.

However, when town assessors sent the first tax bill to New York City, all they received in payment was a letter from city lawyers stating their refusal to pay. The city defended its position by referencing the new State law which declared the aqueducts transporting water to the city through the Catskills to be tax-free.

This was not an acceptable answer for the Gilboans. But to take on New York City, they would need the best lawyers available to them in their tiny upstate town. The two men enlisted for the seemingly impossible task were Wallace H. Sidney of Central Bridge and F. Walter Bliss, one of Gilboa's own sons.

Bliss was born at the Becker family farm in the hamlet of Mackey's Corners on April 27, 1892. This was one of the oldest colonial families in the area, and Dr. Leonard attended the birth.

Alberta liked the initials of her husband's name—FWB—and so named her son Francis Walter Bliss. Soon after his birth, the family moved to Middleburgh, the place where he planted roots that grew through the years, and eventually created his own expansive family tree.

But for then, he was the young son of the owners and operators of a general store on Railroad Avenue, where he developed what he described as a "Puritan work ethic," and realized the absolute pleasure he felt interacting with people and participating in his community.

After graduating high school, Bliss attended Cornell University and Albany Law School. In 1917, he returned to Middleburgh to practice law. Later that year, he put his career on hold to join the army during the First World War. He spent a year and a half in the service, earning the rank of Lieutenant. In 1918, Bliss was honorably discharged from the army and returned to Middleburgh.

Success came fast to Bliss, and soon he became county attorney for Schoharie county, as well as caring for his own flourishing practice. Despite



Francis Walter Bliss

Courtesy Snyder Family Library 80011.001

his youth, his legal aid was to be a necessary commodity for the town of Gilboa in its case against New York.

It was a long and hard battle for Gilboa. The odds were stacked against the town in a case that lasted three years. Because of the state tax law, New York City was paying no taxes on other reservoirs throughout the Catskill area, and the city was determined to keep it that way.

Victory finally came in 1929 when Justice Ellis J. Staley ruled in favor of Gilboa, agreeing with the Schoharie lawyers' claim that the Gilboa dam was more than a "typical" aqueduct, and should indeed be subject to taxation. To this day, the winning of the case against the city is still considered one of the greatest financial benefits to the county.

Bliss, only thirty-seven at the time, was hailed as a local hero. After winning a case that would be the high point in most lawyers' careers, Bliss moved on to even greater endeavors, such as serving in the New York State Supreme Court from 1930 to 1944, running as a Democratic candidate for Governor in 1950, and of course, continuing to serve the county. He stayed active in Schoharie County government and politics for the rest of his life.

Chloe Snyder is the great-granddaughter of F. Walter Bliss. She graduated Middleburgh High School in 2014 and attends the State University of New York at Albany, where she studies English Education.

The Gilboa Museum

Kristen Wyckoff

Once upon a time there was little tiny museum called the Gilboa Museum. It was a unique & special place for the community of Gilboa. It not only housed the significant tree fossils of the area, but it was a representation of the people of the village and community that lived there before their town was sacrificed for a water reservoir. The reservoir created drinking water for the millions of people in NYC. The people really never got over losing their town. No town was rebuilt; many just moved away or up into the mountains around the now existing water reservoir.

One day after a the school's alumni banquet a gentleman named Nicholas Juried who graduated from Gilboa School in 1947 discovered this quaint little museum. Mr. Juried helped this museum by donating money to build a barn for donated farm equipment that was well preserved. Nick donated trees for the Memorial tree garden, and he donated upgrades to the museum over the years. Nick decided he wanted to build an addition to this lovely museum.

In 2015 Nicholas Juried after another wonderful alumni banquet at the Gilboa School met with the museum committee and other interested members of the Gilboa Historical Society. He told them his dream of building a "Gilboa History Center" as an addition to this quaint symbolic museum. Nick told them that he grew up here in Gilboa and credits his parents and this local community in so many ways. He made a life for himself in the state of Texas where he has lived most of his life with his wife and daughter, but here in Gilboa is where he wants a legacy to exist for him and a tribute to his loving parents John and Anna Juried.

Today we announce that we have broken ground on this new addition that is being built over the fall, winter and spring months. The summer of 2016 is going to be a summer of new displays, genealogy library, children's activities, and a community center for events and meetings. It will be a summer of celebration and rejuvenation for the people of Gilboa and surrounding communities.

Thank you Nicholas Juried. We want to make your dream come true!

Kristen Wyckoff
Chair of the Gilboa Museum

Wanted: Village Photographs, Artifacts, and Tales

If you've followed our walking tour, you know the GHS has some wonderful photos and insights. But our collection also has glaring holes. We need details about the village churches: the Reformed Dutch Church and parsonage in the center of the village, the Methodist Episcopal Church and parsonage on Main Street just south of the business district, and the Old School Baptist Church out toward Conesville.

We lack schoolhouse details. We've no outside photos of buildings or children at recess. We need pictures of schools on the Gilboa-Conesville line and those serving Mackey, Broome Center, South Gilboa, Cornell Hollow, Shew Hollow, Manorkill, Conesville, and Strykerville.

We're impressed by the variety and number of businesses that populated our valley (retail Main Street and industries like Tri County, Gilboa Creamery, cotton mill, the foundry, the grist and saw mills, the water company, Pierce and Peaslee, etc.), but the history would be even more impressive with more details about how they did business, what they charged, and who and how they served their clientele.

We're even missing whole families. Along Main Street alone we need information on the families of Harriet R. Gaylord, John C. Mattice, Louis C. Baldwin, Mary E. Dickinson, Martha J. Chichester, Revillo Richtmyer, John McCauley, Albert Clark, and Rene E. Brownell.

Do you have stories of Stryker's Old Hotel, later the Tuttle House, and then the O'Brien House, which was sold to tinsmith Joseph Gilmore in a foreclosure sale for \$1,075? Do you recall stories about the two village cemeteries, one called the New Cemetery even before the Gilboa Rural Cemetery was conceived!

Let's fill in the holes!

Search your attics, tag sales and eBay for memories and artifacts of daily life in the village. Please call us (607 652-2665) to add even slightly to Gilboa's history.

Tell us about this farmhouse with its attached barn and a ramp and cart to roll milk cans to the side of the road for pickup.

Courtesy Gilboa Historical Society 7400400.003



GILBOA MILITARY SERVICE PERSONNEL

LaVerne Hubbard

We continue to develop an honor roll of everyone who has served in the military and has lived at some point in Gilboa . . . and we still find new names to add.

The alphabetized list should be easy for you to check that relatives, classmates, and neighbors are all listed—we take pride in our military, so please take a couple of minutes to make sure we miss no one!

AR American Revolution	I World War I	V Vietnam
12 War of 1812	II World War II	AV After Vietnam
CW Civil War	K Korea	DS Iraq, Desert Storm
SA Spanish-American	K-V Korea to Vietnam	AC Afghanistan Current
Ackerly, Oscar (CW)	Borst, George (SA)	Clark, Benjamin (KV)
Aleksejczyk, Walter W (II)	Borthwick, Alex (CW)	Clark, Charles (V)
Ames, Francis C (CW)	Boschetti, Aramando (II)	Clark, Elwood Jr. (II)
Andrews, George (CW)	Brainard, Charles (K)	Clark, Frank (V)
Bailey, James L (CW)	Brainard, Donald (K)	Clark, George (II)
Baldwin, William L (CW)	Brainard, Floyd (K)	Clark, George (KV)
Banker, Stanley (II)	Brainard, Richard (KV)	Clark, James (CW)
Barlow, John (CW)	Bremer, Ernest Sr (II)	Clark, James (KV)
Barlow, Joseph (CW)	Brewster, J L (CW)	Clark, Joshua (AC)
Batchelder, David (CW)	Brewster, Otis (CW)	Clark, Kenneth (KV)
Beach, Willard O (CW)	Brines, Harvey J (CW)	Clark, Larry (V)
Beattie, Donald (K)	Brosnam, William F (II)	Clark, Lester (II)
Beattie, Donald J (DS)	Brown, Franklin (KV)	Clark, Louis (K)
Becker, Paul (II)	Brown, James (V)	Clark, Orville (II)
Becker, William A (CW)	Buel, George (II)	Clark, Richard (II)
Becker, William M (CW)	Buell, Endwell (KV)	Clark, Richard (KV)
Bellinger, James (V)	Burkett, Beth (AC)	Clark, William (II)
Beltman, John (CW)	Cain, Ruben (CW)	Clark, Floyd (II)
Benjamin, Philo (SA)	Cain, William (CW)	Conine, Douglas (II)
Bevins, Dennis (CW)	Callahan, Arnold (II)	Connelly, Robert (K)
Bevins, Ernest (II)	Carpinelli, Bernard (KV)	Conro, Carlton (II)
Bevins, Gene (II)	Case, Charles (I)	Conro, Darrel (KV)
Bevins, Gene (V)	Case, Clifford (KV)	Conro, David (KV)
Blakslee, Charles (II)	Chapman, Omer (CW)	Cook, Claude (K)
Blakslee, Rudolph (II)	Chase, Victor (II)	Coon, Timothy P (CW)
Bliss, Donald (KV)	Chichester, George (CW)	Cornell, Lawrence (II)
Bliss, F. Walter (I)	Clapper, Arnold (KV)	Cornell, Lyndon (II)
Bliss, Samuel (AR)	Clark, Amos (12)	Cornell, Marvin (II)
Boehning, Robert E (II)	Clark, Benjamin (K)	Creghton, David (CW)

- Creghton, Henry (CW)
Cronk, Kenneth F (II)
Curtis, Richard (II)
Cutler, Ralph (K)
Damm, John (II)
Davis, John (II)
Davis, John O (I)
Davis, Keyes (I)
Dayman, Charles (CW)
Dent, Gerald (KV)
Desyliva, Andrew (CW)
Desyliva, Henry A (CW)
Desyliva, Homer (CW)
Dingman, Robert (II)
Disbro, Charles (CW)
Driggs, Charles A (CW)
Duncan, Orra M (CW)
Efner, William M (12)
Eggnor, Nathan (CW)
Eglin, Ernie (KV)
Eisner, Hollis (II)
Eklund, Carl (KV)
Ekstrom, Robert (II)
Ekstrom, Eugene (K)
Ekstrom, Clyde (II)
Ellerson, Charles (CW)
Ellerson, David (AR)
Ellis, Glendon (II)
Ellis, Paul E (KV)
Face, Erastus (CW)
Fanning, Benjamin (CW)
Feiterling, William (KV)
Finch, Stephen (CW)
Finch, William (CW)
Fisher, Joseph A (II)
Flint, Amos (II)
Foland, George (II)
Foote, Robert (V)
Fowler, Regnald (II)
Fox, Elmer (CW)
Franklin, Nelson Willard (CW)
Fraqher, Arthur (CW)
Freeman, Donald (KV)
Fries, George (CW)
Friest, Wesley (CW)
Gadrick, Edward (II)
Gaffney, Charles (II)
Gardner, Charles (CW)
Gavit, Leander (CW)
German, Stanley (II)
Gifford, Mark (KV)
Gifford, Shawn (AC)
Gonzlik, John (II)
Goodfellow, Martin (CW)
Gordon, Ralph (K)
Gordon, Seth R (CW)
Gordon, Stephen (CW)
Gregory, William (II)
Hager, George (II)
Hager, Julian (II)
Haight, Manley (KV)
Hallock, Glen (KV)
Hallock, Warren (I)
Hanley, Harold R (II)
Harrington, Anton (II)
Harris, Roscoe (CW)
Hartwell, Charles (CW)
Hartwell, Donald
Harwood, Hubert A (II)
Hay, Alden M (CW)
Hay, Jefferson (CW)
Heinzinger, Walter (K)
Hilliker, David (II)
Hilliker, Donald L (II)
Hilliker, Ernest (II)
Hinman, Avery (I)
Hinman, Robert (II)
Hoagland, Guy (II)
Holdridge, Orlando (CW)
Hollis, Eisner (II)
Houghtaling, Edward (CW)
Houghtaling, Samuel (CW)
Hubbard, Clifton LaVerne (KV)
Hubbard, David (KV)
Hubbard, Douglas (KV)
Hubbard, Everett B (II)
Hubbard, Gerald (KV)
Hubbel, Richtmyer Dr (CW)
Hubble, Solomon D (CW)
Jackson, David (CW)
Jackson, Jeremiah (CW)
Jenkins, John (CW)
Johnson, Robert (K)
Jones, Albert (II)
Jones, James (AC)
Juried, Nicholas (K)
Kandora, Walter (K)
Karlsen, Per B (II)
Kaufmann Harwood
 White, Catherine (II)
Koerner, Paul (II)
Kohler, Lewis (II)
Krieger, Earl (I)
Krieger, Henry (I)
Lafferty, Peter (CW)
Lake, Martin (CW)
Lane, Perry (CW)
Lateula, Gregory (V)
Latta, Wilfred (K)
Laux, John (II)
Lawyer, Francis (CW)
Layman, Wallace (CW)
Lee, Peter (CW)
Leger, Carl R (KV)
Leger, John George Jr (II)
Leger, John George Sr (I, II)
Leger, John George Sr (I)
Leger, Paul R (II)
Leger, Raymond A (K)
Leger, William H (II)
Lemlily, Winslow P (CW)
Lewis, Donald (II)
Lewis, George Harlan (II)
Lewis, Richard (II)
Licursi, Albe (V)
Lindsay, Horace W (II)
Lord, Vernon (II)
Mace, Donald (K)
Mace, Victor (K)
Mackay, James A (CW)
Mackey, Daniel (12)
Marchase, Michael (II)
Marold, Paul (KV)

- Marsh, Joseph (K)
 Mattice, Abram (I)
 Mattice, Alonzo (CW)
 Mattice, Ford (II)
 Mattice, Henry C (CW)
 Mattice, Leo (I)
 Mattice, Paul (CW)
 McGinnes, Barney (CW)
 McIntyre, Archibald (CW)
 Meeghan, David (V)
 Meeghan, John (KV)
 Monroe, Henry (CW)
 Monroe, Paul (CW)
 Moon, Luman D (CW)
 Moore, John (SA)
 More, Timothy S (CW)
 Morkraut, Michael (KV)
 Morrissey, Robert (V)
 Mower, Leroy (KV)
 Mueller, Herb (KV)
 Mueller, Robert (V)
 Mullenix, Averil (KV)
 Nakoneczny, Kenneth (AV)
 Newcomb, Sylvester (CW)
 Nickerson, Franklin (II)
 O'Hara, James John (II)
 Oakley, Fred (II)
 Oakley, Fred III (KV)
 Oakley, Richard (DS)
 Orlando, Donald (V)
 Orlando, Michael (AC)
 Palmeri, George (II)
 Paradowski, Rudolph (V)
 Parker, Lewis Jr (KV)
 Peckham, Vivian B (II)
 Peek, Alvah (CW)
 Peters, Everett (K)
 Peterson, Everett (II)
 Peterson, Harold (II)
 Peterson, Virginia Moore
 Pickett, Robert (KV)
 Porter, Jason (AC)
 Proper, John R (CW)
 Reed, Morton (I)
 Reed, William L (CW)
 Reed, Gordon (II)
- Regular, Laurence (II)
 Richtmeyer, Richard (II)
 Rider, Ruben (CW)
 Riedman, Valentine (K)
 Rijos, Felix (AC)
 Roe, Daniel S (CW)
 Roe, Herman (12)
 Roe, Jinks P (CW)
 Ruehle, Alfred (K)
 Safford, Owen D (II)
 Sauveur, Timothy (AV)
 Saxe, Charles (CW)
 Schermerhorn, Hiram
 (CW)
 Schermerhorn, Warren
 Schermerhorn, Warren (II)
 Schermerhorn, William
 (CW)
 Schwartzwaelder, Allen (I)
 Sellick, Whited (CW)
 Shafer, Thomas L (CW)
 Shaffer, George (I)
 Shaffer, Nelson (12)
 Shaffer, Nelson (SA)
 Sharick, Sara L (AC)
 Shoemaker, Abram (CW)
 Slater, Ralph [Pete] (KV)
 Smith, Hiram (CW)
 Smith, Sylvester J (CW)
 Snyder, Derrick (AC)
 Snyder, James Jr. (KV)
 Snyder, William (12)
 Southwick, Calvin (CW)
 Sowles, Lorenzo (CW)
 Sprague, Elisha (12)
 Standhart, James (AV)
 Standhart, John (K)
 Starheim, Olaf (K)
 Stewart, James (AR)
 Stillwell, Hiram (CW)
 Stoner, Gerald O (KV)
 Stryker, Carson (KV)
 Stryker, Monte (KV)
 Swartz, Edward (II)
 Taylor, James Barry (KV)
 Terry, William (V)
- Thorn, Frank D (K)
 Tibbets, James (CW)
 Tompkins, Irving (K)
 Tompkins, Norwood (K)
 Truesdell, Larry (V)
 Van Aken, Arthur (II)
 Van Aker, Kipp (V)
 Van Hoesen, Marshal (II)
 Varrecchia, Clement (II)
 Vonderhide, Marilyn
 Hubbard Harris (KV)
 Vroman, Albert L (CW)
 Vroman, William (CW)
 Wales, Levi (12)
 Wally, Ronald M (II)
 Ward, Philip (II)
 Warner, Milo (CW)
 Waters, John (CW)
 Welch, Michael (CW)
 Wells, Randall (II)
 Whitbeck, Alton (II)
 Wickert, Fredrick (KV)
 Wier, Donald (II)
 Wiesmer, Malbone (CW)
 Wilber, Hiram (CW)
 Wilber, Philip (CW)
 Wilber, Stephen (CW)
 Williams, George (CW)
 Williamson, Josh (AC)
 Wilson, Randolph (II)
 Wiltse, William W (CW)
 Wood, Charles (CW)
 Wood, Charles N (CW)
 Wood, Donald E (AV)
 Wood, Jared L.
 Wood, John (CW)
 Wood, Michell E (AV)
 Wood, Philip (II)
 Wright, George (CW)
 Wright, John (CW)
 Wyckoff, Donald (AC)
 Yeomans, Charles (CW)
 Yeomans, Horace (CW)
 Yeomans, George (CW)
 Zimba, Stanley (V)
 Zinner, Henry Carl (II)

Your name, address, and membership status appears on the label of the physical *Quarterly*: a * next to your name indicates a paid-up individual membership; likewise, ** indicates a paid-up couple's membership, and *** indicates a paid-up family. A single dagger † indicates lifetime membership and a double ‡ indicates a couple's lifetime membership. Please consider joining if you are not a member, and let us know if we have incorrect address information.

Membership Application Form

Name: _____ () Lifetime membership (\$100.00) \$ _____

Subscription format: Physical Electronic Both () Family membership (\$25.00) \$ _____

Email: _____ () Couples membership (\$15.00) \$ _____

Address:* _____ () Individual membership (\$10.00) \$ _____

_____ () Senior or student membership (\$7.00) \$ _____

City: _____ () Scholarship fund \$ _____

State: _____ Zip: _____ Phone: _____ () Gilboa Historical Society *Quarterly* \$ _____

_____ () Gilboa Historical Society Museum \$ _____

_____ () Building Fund \$ _____

* Please provide any temporary address for our mailings in early March, June, _____ () Displays, Genealogy, Archiving, etc \$ _____

_____ () General fund \$ _____

_____ () Memorial gifts† \$ _____

Address: _____ Total amount enclosed \$ _____

City: _____

State: _____ Zip: _____ Phone: _____

Gilboa Historical Society, Post Office Box 52, Gilboa, NY 12076

† The Board has a "wish list" of memorial gifts; please inquire of a board member, and provide the complete wording of the dedication, your name and address, and the name and address of a next-of-kin to be notified.

GILBOA HISTORICAL SOCIETY
POST OFFICE BOX 52
GILBOA, NY 12076

U.S. POSTAGE PAID
PERMIT NUMBER 9
GILBOA HISTORICAL SOCIETY
P.O. Box 52
GILBOA, NY 12076